


Horseshoe Lake County Forest Road # 8, Crow Wing County, Minnesota

PARCEL #	RE CODE	FEENAME	SECTION	TOWNSHIP	RANGE	LEGAL DESCRIPTION
PARCEL 1	500192400D00009	DAVIDSON, BERNICE M	19	45	28	THAT PART OF SE1/4 OF NW1/4 LYING W OF THE E 359.76 FT
PARCEL 2	500192300000009	TAX FORFEITED	19	45	28	SW1/4 OF NW1/4

May 7, 2008
DATE OF PUBLIC HEARING


RACHEL REABE NYSTROM, CHAIR
BOARD OF COUNTY COMMISSIONERS
CROW WING COUNTY, MINNESOTA

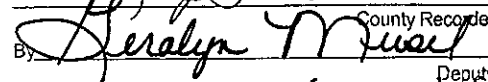
COUNTY RECORDING SPACE BELOW

ATTEST: 
DEBORAH A. ERICKSON, COUNTY AUDITOR
CROW WING COUNTY, MINNESOTA

Office of County Recorder
County of Crow Wing, MN } *n/c*
CO WK

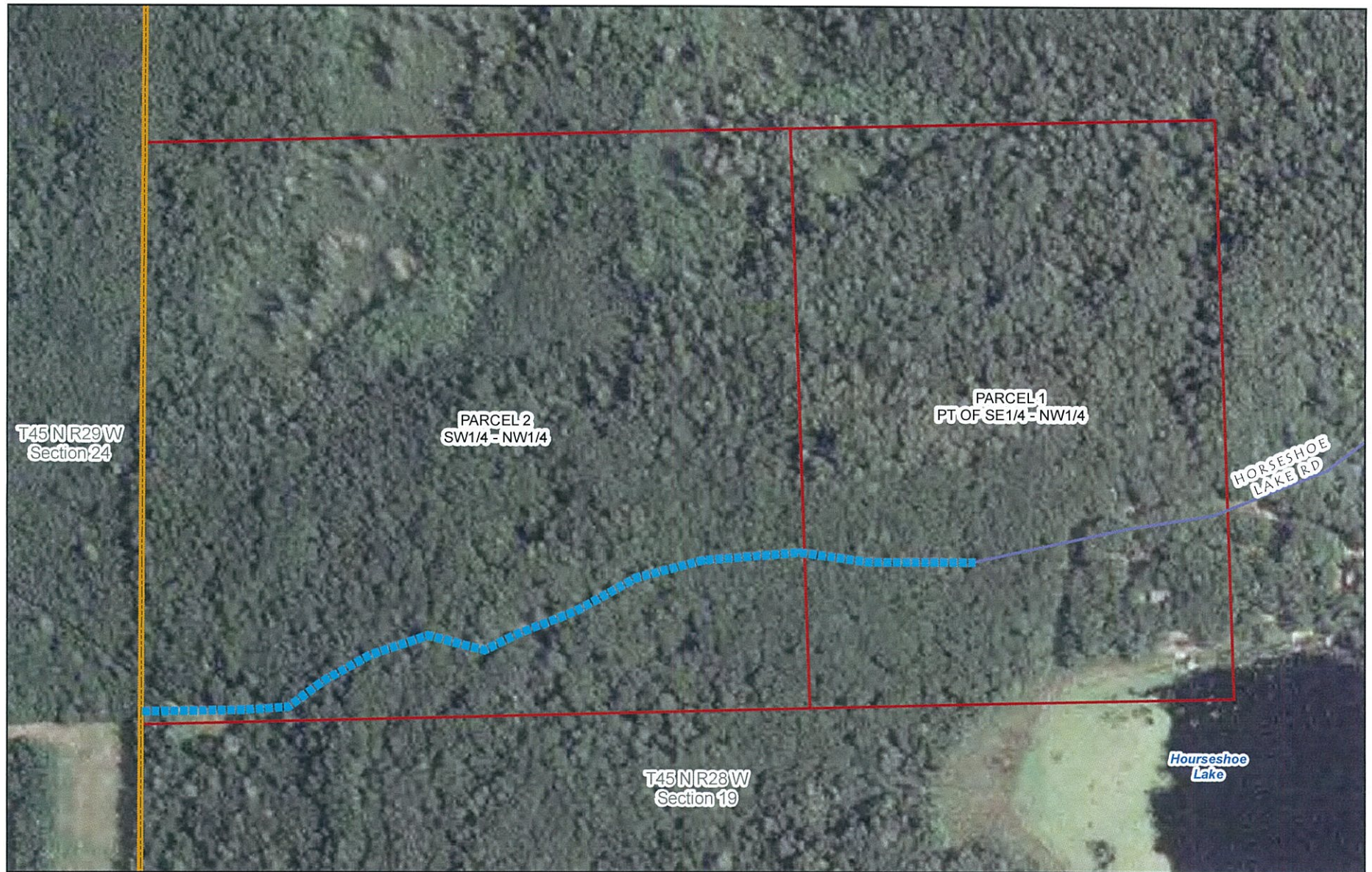
I hereby certify that the within instrument was filed
in this office for record on the 15 day of July
A.D. 2008 at 3 o'clock P. M.
and was duly recorded as Doc. No. 0750729

Adopted at Brainerd, Minnesota, this 10th day of June, 2008

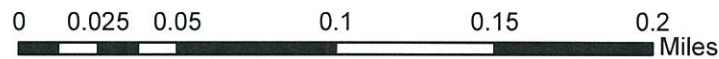

County Recorder
Deputy
1 of 2

RETURN TO *Hand Dept.*

Horseshoe Lake County Forest Road #8, Crow Wing County , Minnesota



1 inch equals 307 feet



MS 89.715 states "the roads to be recorded will be to the width of the actual use including ditches, backslopes, fills, and maintained rights-of-ways". County Forest Roads are variable in width and the map symbol representing the County Forest Roads is intended to represent the location of those County Forest Roads, not the actual width.

----- Horseshoe Lake County Forest Rd