


Little Thompson Lake County Forest Road # 13, Crow Wing County, Minnesota

PARCEL #	RE_CODE	FEENAME	SECTION	TOWNSHIP	RANGE	LEGAL DESCRIPTION
PARCEL 1	890321100000009	LARSON, CHARLES J	32	137	25	NE1/4 OF NE1/4
PARCEL 2	890321400000009	TAX FORFEITED	32	137	25	SE1/4 OF NE1/4
PARCEL 3	890332300000009	TAX FORFEITED	33	137	25	SW1/4 OF NW1/4
PARCEL 4	890333200000009	TAX FORFEITED	33	137	25	NW1/4 OF SW1/4
PARCEL 5	890324100000009	TAX FORFEITED	32	137	25	NE1/4 OF SE1/4
PARCEL 6	890324200000009	TAX FORFEITED	32	137	25	NW1/4 OF SE1/4
PARCEL 7	890324300000009	TAX FORFEITED	32	137	25	SW1/4 OF SE1/4
PARCEL 8	580051200000009	TAX FORFEITED	5	136	25	NW1/4 OF NE1/4
PARCEL 9	580051300000009	TAX FORFEITED	5	136	25	SW1/4 OF NE1/4

May 7, 2008
DATE OF PUBLIC HEARING


RACHEL REABE NYSTROM, CHAIR
BOARD OF COUNTY COMMISSIONERS
CROW WING COUNTY, MINNESOTA

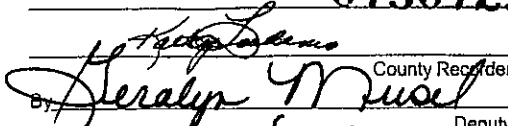
COUNTY RECORDING SPACE BELOW

ATTEST: 
DEBORAH A. ERICKSON, COUNTY AUDITOR
CROW WING COUNTY, MINNESOTA

Office of County Recorder
County of Crow Wing, MN } *n/c CD WK*

I hereby certify that the within instrument was filed
in this office for record on the 15 day of July
A.D. 2008 at 3 o'clock P M.
and was duly recorded as Doc. No. 0750725

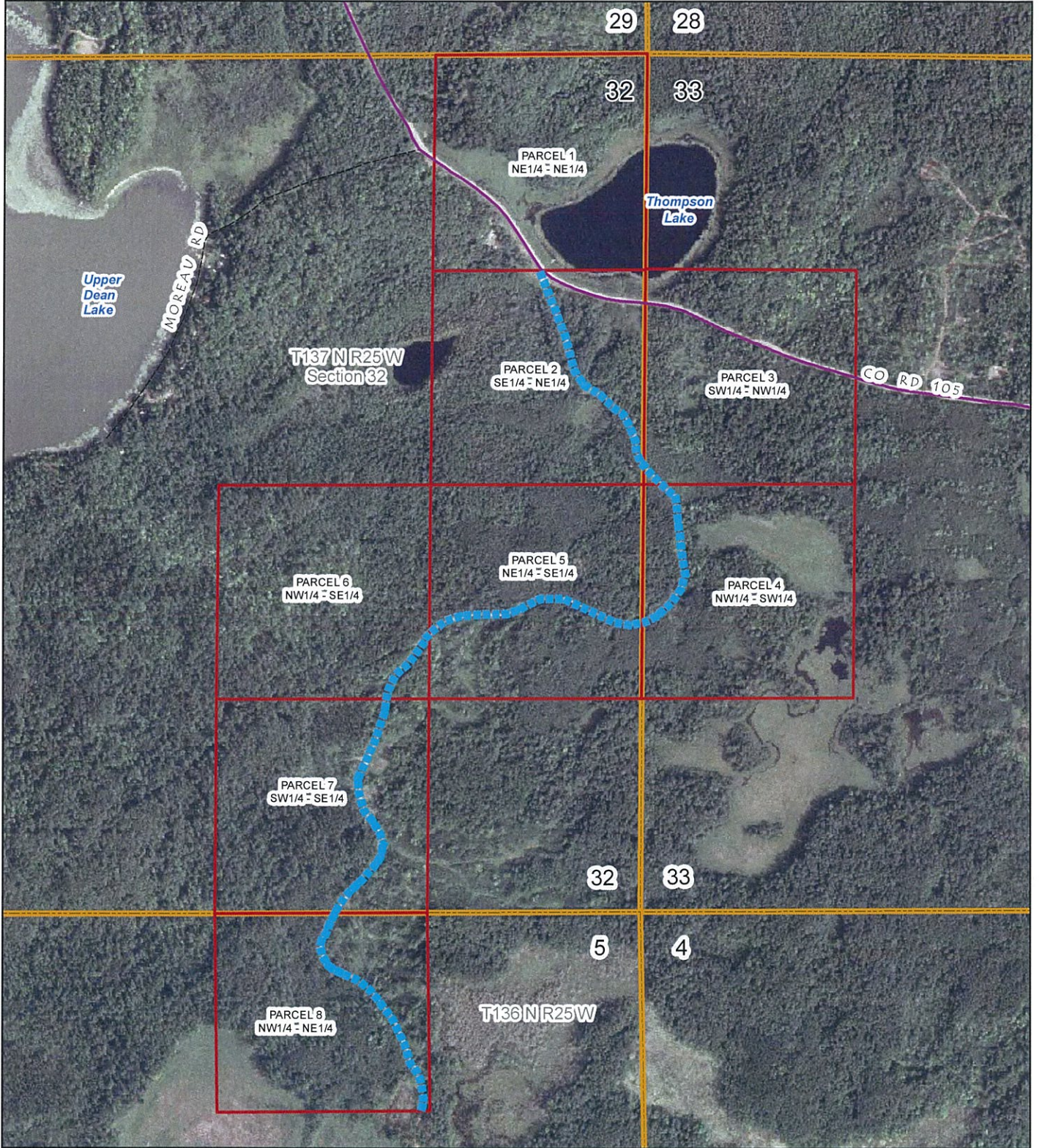
Adopted at Brainerd, Minnesota, this 10th day of June, 2008


County Recorder
Deputy

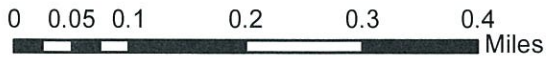
RETURN TO Land Dept.

725

Little Thompson Lake County Forest Road #13, Crow Wing County , Minnesota



1 inch equals 840 feet



 Little Thompson Lake
County Forest Rd

MS 89.715 states "the roads to be recorded will be to the width of the actual use including ditches, backslopes, fills, and maintained rights-of-ways". County Forest Roads are variable in width and the map symbol representing the County Forest Roads is intended to represent the location of those County Forest Roads, not the actual width.