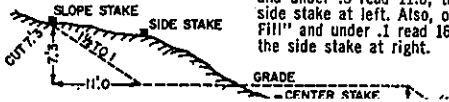


CWC Field Book
No. 8

DISTANCES FROM SIDE STAKES FOR CROSS-SECTIONING

Roadway of any Width. Side Slopes 1½ to 1.

In the figure below: opposite 7 under "Cut or Fill" and under .3 read 11.0, the distance out from the side stake at left. Also, opposite 11 under "Cut or Fill" and under .1 read 16.7, the distance out from the side stake at right.



Cut or Fill	PE STAKE										Cut or Fill																
	.9	.8	.7	.6	.5	.4	.3	.2	.1	0																	
0	1.4	2.9	4.4	5.9	7.4	8.9	10.4	11.9	13.4	14.9	16.4	17.9	19.4	20.9	22.4	23.9	25.4	26.9	28.4	29.9	31.4	32.9	34.4	35.9	37.4	38.9	40.4
1	2.9	4.4	5.9	7.4	8.9	10.4	11.9	13.4	14.9	16.4	17.9	19.4	20.9	22.4	23.9	25.4	26.9	28.4	29.9	31.4	32.9	34.4	35.9	37.4	38.9	40.4	41.9
2	4.4	5.9	7.4	8.9	10.4	11.9	13.4	14.9	16.4	17.9	19.4	20.9	22.4	23.9	25.4	26.9	28.4	29.9	31.4	32.9	34.4	35.9	37.4	38.9	40.4	41.9	43.4
3	5.9	7.4	8.9	10.4	11.9	13.4	14.9	16.4	17.9	19.4	20.9	22.4	23.9	25.4	26.9	28.4	29.9	31.4	32.9	34.4	35.9	37.4	38.9	40.4	41.9	43.4	44.9
4	7.4	8.9	10.4	11.9	13.4	14.9	16.4	17.9	19.4	20.9	22.4	23.9	25.4	26.9	28.4	29.9	31.4	32.9	34.4	35.9	37.4	38.9	40.4	41.9	43.4	44.9	46.4
5	8.9	10.4	11.9	13.4	14.9	16.4	17.9	19.4	20.9	22.4	23.9	25.4	26.9	28.4	29.9	31.4	32.9	34.4	35.9	37.4	38.9	40.4	41.9	43.4	44.9	46.4	47.9
6	10.4	11.9	13.4	14.9	16.4	17.9	19.4	20.9	22.4	23.9	25.4	26.9	28.4	29.9	31.4	32.9	34.4	35.9	37.4	38.9	40.4	41.9	43.4	44.9	46.4	47.9	49.4
7	11.9	13.4	14.9	16.4	17.9	19.4	20.9	22.4	23.9	25.4	26.9	28.4	29.9	31.4	32.9	34.4	35.9	37.4	38.9	40.4	41.9	43.4	44.9	46.4	47.9	49.4	50.9
8	13.4	14.9	16.4	17.9	19.4	20.9	22.4	23.9	25.4	26.9	28.4	29.9	31.4	32.9	34.4	35.9	37.4	38.9	40.4	41.9	43.4	44.9	46.4	47.9	49.4	50.9	52.4
9	14.9	16.4	17.9	19.4	20.9	22.4	23.9	25.4	26.9	28.4	29.9	31.4	32.9	34.4	35.9	37.4	38.9	40.4	41.9	43.4	44.9	46.4	47.9	49.4	50.9	52.4	53.9
10	16.4	17.9	19.4	20.9	22.4	23.9	25.4	26.9	28.4	29.9	31.4	32.9	34.4	35.9	37.4	38.9	40.4	41.9	43.4	44.9	46.4	47.9	49.4	50.9	52.4	53.9	55.4
11	17.9	19.4	20.9	22.4	23.9	25.4	26.9	28.4	29.9	31.4	32.9	34.4	35.9	37.4	38.9	40.4	41.9	43.4	44.9	46.4	47.9	49.4	50.9	52.4	53.9	55.4	56.9
12	19.4	20.9	22.4	23.9	25.4	26.9	28.4	29.9	31.4	32.9	34.4	35.9	37.4	38.9	40.4	41.9	43.4	44.9	46.4	47.9	49.4	50.9	52.4	53.9	55.4	56.9	58.4
13	20.9	22.4	23.9	25.4	26.9	28.4	29.9	31.4	32.9	34.4	35.9	37.4	38.9	40.4	41.9	43.4	44.9	46.4	47.9	49.4	50.9	52.4	53.9	55.4	56.9	58.4	59.9
14	22.4	23.9	25.4	26.9	28.4	29.9	31.4	32.9	34.4	35.9	37.4	38.9	40.4	41.9	43.4	44.9	46.4	47.9	49.4	50.9	52.4	53.9	55.4	56.9	58.4	59.9	61.4
15	23.9	25.4	26.9	28.4	29.9	31.4	32.9	34.4	35.9	37.4	38.9	40.4	41.9	43.4	44.9	46.4	47.9	49.4	50.9	52.4	53.9	55.4	56.9	58.4	59.9	61.4	62.9
16	25.4	26.9	28.4	29.9	31.4	32.9	34.4	35.9	37.4	38.9	40.4	41.9	43.4	44.9	46.4	47.9	49.4	50.9	52.4	53.9	55.4	56.9	58.4	59.9	61.4	62.9	64.4
17	26.9	28.4	29.9	31.4	32.9	34.4	35.9	37.4	38.9	40.4	41.9	43.4	44.9	46.4	47.9	49.4	50.9	52.4	53.9	55.4	56.9	58.4	59.9	61.4	62.9	64.4	65.9
18	28.4	29.9	31.4	32.9	34.4	35.9	37.4	38.9	40.4	41.9	43.4	44.9	46.4	47.9	49.4	50.9	52.4	53.9	55.4	56.9	58.4	59.9	61.4	62.9	64.4	65.9	67.4
19	29.9	31.4	32.9	34.4	35.9	37.4	38.9	40.4	41.9	43.4	44.9	46.4	47.9	49.4	50.9	52.4	53.9	55.4	56.9	58.4	59.9	61.4	62.9	64.4	65.9	67.4	68.9
20	31.4	32.9	34.4	35.9	37.4	38.9	40.4	41.9	43.4	44.9	46.4	47.9	49.4	50.9	52.4	53.9	55.4	56.9	58.4	59.9	61.4	62.9	64.4	65.9	67.4	68.9	70.4
21	32.9	34.4	35.9	37.4	38.9	40.4	41.9	43.4	44.9	46.4	47.9	49.4	50.9	52.4	53.9	55.4	56.9	58.4	59.9	61.4	62.9	64.4	65.9	67.4	68.9	70.4	71.9
22	34.4	35.9	37.4	38.9	40.4	41.9	43.4	44.9	46.4	47.9	49.4	50.9	52.4	53.9	55.4	56.9	58.4	59.9	61.4	62.9	64.4	65.9	67.4	68.9	70.4	71.9	73.4
23	35.9	37.4	38.9	40.4	41.9	43.4	44.9	46.4	47.9	49.4	50.9	52.4	53.9	55.4	56.9	58.4	59.9	61.4	62.9	64.4	65.9	67.4	68.9	70.4	71.9	73.4	74.9
24	37.4	38.9	40.4	41.9	43.4	44.9	46.4	47.9	49.4	50.9	52.4	53.9	55.4	56.9	58.4	59.9	61.4	62.9	64.4	65.9	67.4	68.9	70.4	71.9	73.4	74.9	76.4
25	38.9	40.4	41.9	43.4	44.9	46.4	47.9	49.4	50.9	52.4	53.9	55.4	56.9	58.4	59.9	61.4	62.9	64.4	65.9	67.4	68.9	70.4	71.9	73.4	74.9	76.4	77.9
26	40.4	41.9	43.4	44.9	46.4	47.9	49.4	50.9	52.4	53.9	55.4	56.9	58.4	59.9	61.4	62.9	64.4	65.9	67.4	68.9	70.4	71.9	73.4	74.9	76.4	77.9	79.4
27	41.9	43.4	44.9	46.4	47.9	49.4	50.9	52.4	53.9	55.4	56.9	58.4	59.9	61.4	62.9	64.4	65.9	67.4	68.9	70.4	71.9	73.4	74.9	76.4	77.9	79.4	80.9
28	43.4	44.9	46.4	47.9	49.4	50.9	52.4	53.9	55.4	56.9	58.4	59.9	61.4	62.9	64.4	65.9	67.4	68.9	70.4	71.9	73.4	74.9	76.4	77.9	79.4	80.9	82.4
29	44.9	46.4	47.9	49.4	50.9	52.4	53.9	55.4	56.9	58.4	59.9	61.4	62.9	64.4	65.9	67.4	68.9	70.4	71.9	73.4	74.9	76.4	77.9	79.4	80.9	82.4	83.9
30	46.4	47.9	49.4	50.9	52.4	53.9	55.4	56.9	58.4	59.9	61.4	62.9	64.4	65.9	67.4	68.9	70.4	71.9	73.4	74.9	76.4	77.9	79.4	80.9	82.4	83.9	85.4
31	47.9	49.4	50.9	52.4	53.9	55.4	56.9	58.4	59.9	61.4	62.9	64.4	65.9	67.4	68.9	70.4	71.9	73.4	74.9	76.4	77.9	79.4	80.9	82.4	83.9	85.4	86.9
32	49.4	50.9	52.4	53.9	55.4	56.9	58.4	59.9	61.4	62.9	64.4	65.9	67.4	68.9	70.4	71.9	73.4	74.9	76.4	77.9	79.4	80.9	82.4	83.9	85.4	86.9	88.4
33	50.9	52.4	53.9	55.4	56.9	58.4	59.9	61.4	62.9	64.4	65.9	67.4	68.9	70.4	71.9	73.4	74.9	76.4	77.9	79.4	80.9	82.4	83.9	85.4	86.9	88.4	89.9
34	52.4	53.9	55.4	56.9	58.4	59.9	61.4	62.9	64.4	65.9	67.4	68.9	70.4	71.9	73.4	74.9	76.4	77.9	79.4	80.9	82.4	83.9	85.4	86.9	88.4	89.9	91.4
35	53.9	55.4	56.9	58.4	59.9	61.4	62.9	64.4	65.9	67.4	68.9	70.4	71.9	73.4	74.9	76.4	77.9	79.4	80.9	82.4	83.9	85.4	86.9	88.4	89.9	91.4	92.9
36	55.4	56.9	58.4	59.9	61.4	62.9	64.4	65.9	67.4	68.9	70.4	71.9	73.4	74.9	76.4	77.9	79.4	80.9	82.4	83.9	85.4	86.9	88.4	89.9	91.4	92.9	94.4
37	56.9	58.4	59.9	61.4	62.9	64.4	65.9	67.4	68.9	70.4	71.9	73.4	74.9	76.4	77.9	79.4	80.9	82.4	83.9	85.4	86.9	88.4	89.9	91.4	92.9	94.4	95.9
38	58.4	59.9	61.4	62.9	64.4	65.9	67.4	68.9	70.4	71.9	73.4	74.9	76.4	77.9	79.4	80.9	82.4	83.9	85.4	86.9	88.4	89.9	91.4	92.9	94.4	95.9	97.4
39	59.9	61.4	62.9	64.4	65.9	67.4	68.9	70.4	71.9	73.4	74.9	76.4	77.9	79.4	80.9	82.4	83.9	85.4	86.9	88.4	89.9	91.4	92.9	94.4	95.9	97.4	98.9
40	61.4	62.9	64.4	65.9	67.4	68.9	70.4	71.9	73.4	74.9	76.4	77.9	79.4	80.9	82.4	83.9	85.4	86.9	88.4	89.9	91.4	92.9	94.4	95.9	97.4	98.9	100.4

FROM: CROW WING COUNTY HIGHWAY DEPT
202 LAUREL STREET
BRAINERD MN 56401

TO:

1190.05

FOR BRAUN ENG.
TEST BORINGS LOCATED
10/4/84 TJB - B.R.
3+00
15+00
29+27
40+00
52+00
73+63
84+58
94+00
111+00
123+20
135+00
146+00
155+25

13

K-E The paper in this book is made of 50% high grade rag stock with a WATER RESISTING surface sizing.

KEUFFEL & ESSER CO.

INDEX

PAGE COMMENTS

PAGE 2-5 MISC.

6-17 BASE LINE CONTROL TRAVERS (EDM)

(20 - CENTERLINE R.P.'S (1984 ALIGNMENT))

18 - TIE IN NOTES W-21 & W-22 TO AK-SAB-BEN

CSO-84-06

18-614-03

BEGIN SURVEY 6-11-84 - COMPLETE 6-21-84

TERRY BETLEY -

The right page of the notebook features a large grid of graph paper. The grid is composed of 20 columns and 30 rows of small squares. A vertical margin line is drawn on the left side of the grid, approximately one-fifth of the way across the page. The grid is otherwise empty.

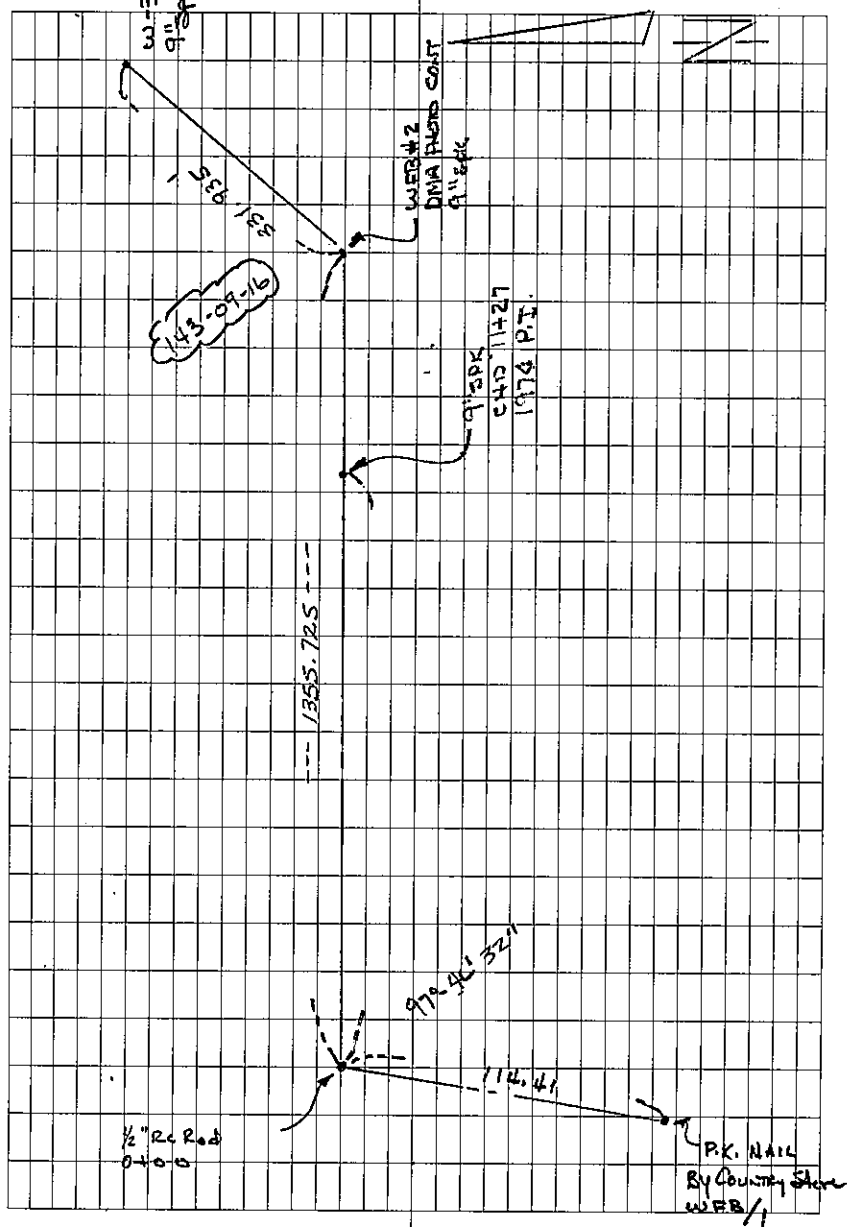
CONTROL TRAVERSE

BSWFB D 00-00-00 v) 179-51-20
 T/O 0+00 R 97-46-25/46-15 F) 119.41
 TOWFB #1 R 277-46-15/-20 M) 39.874
 97-46-24 D 179-59-50/-50 H) 114.41

97-46-32 D 90-00-00
 R 187-46-55/-55
 97-46-40 R 7-46-95/-45
 D 270-00-20/-20

DIST TO W-2

v) 180-36-30
 F) 1355.82
 M) 413.256
 H) 1355.79



4/18/84

B.S. 0400 D) 0000-00 V) 178-14-50

To W-2 R) 143-9-12/12 F) 332.09

To W-3 R) 323-9-7/7 H) 101.228

143-09-09 D) 180-00-02/00 H) 331.93

143-09-16 D) 90-00-00 V) 179-17-10

R) 233-09-35/35 F) 1355.82

143-09-23 R) 53-09-42/37 H) 413.255

D) 270-00-32/28 H) 1355.71

CHECK DIST 8400

B.S. W-2 D) 00-00-00 V) 0-16-30

To W-3 R) 216-22-25/25 F) 1278.67

To W-4 D) 36-22-15/20 H) 389.74

216-22-24 R) 179-59-55/55 H) 1278.65

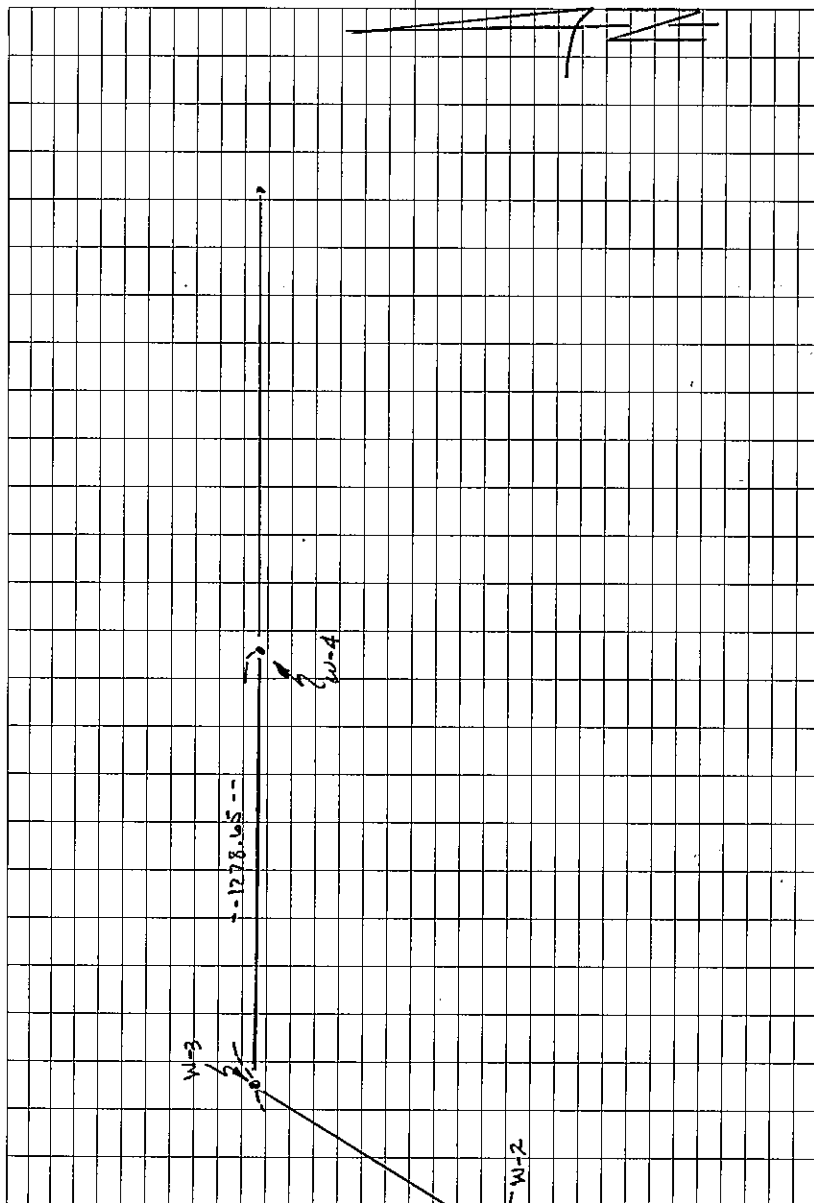
Σ CHECK TO W-2)

216-22-28 D) 90-00-00 V) 181-42-10

R) 306-22-35/35 F) 47 332.08

216-22-33 D) 126-22-40/40 H) 101.221

R) 270-00-10/10 H) 331.94



BS.W-3 D 00-00-00 V) 359-00-50

~~W-4~~ R 180-37-03/05 F) 1030.37

to WLS R 00-37-15/10 M) 319.059

180-37-03 D 180-00-12/12 H) 1030.22

(CHECK #15)

180-37-10 D 90-00-00 V) 180-19-30

R 270-37-20/20 F) 1278.68

180-37-18 D 90-37-20/20 M) 389.793

R 270-00-05/05 H) 1278.66

D) 00-00-00

BS.W-4 D) 181-02-20/20 V) 359-59-40

to WLS R) 1-02-15/20 F) 1367.11

to W-0 D) 180-00-05/05 M) 916.696

151-02-16 H) 1367.11

181-02-17 (CHECK DIST)

D) 90-00-00 V) 179-03-20

02-33 R) 271-02-35/30 F) 1030.35

181-02-18 D) 91-02-05/05 M) 319.054

02-03 R) 270-00-00/00 H) 1030.21

Large empty grid area on the right side of the page.

6/15/84

9

BSW-5 D) 00-00-00 V) 00-10-30

T@W-6 R) 184-04-05/00 F) 1314.46

T@W-7 R) 04-04-05/00 M) 400.649

184-03-53 D) 180-00-10/05 H) 1314.45

1314.44184-04-00 D) 90-00-00 [CHECK T@W-5]

R) 274-04-10/05 V) 359-49-10

184-04-02 R) 94-04-05/05 F) 1367.13

D) 270-00-10/10 M) 412.705

H) 1367.13

BSW-6 D) 00-00-00 V) 00-46-40

T@W-7 R) 179-47-10/15 F) 724.60

T@W-8 R) 359-47-15/10 M) 220.859

D) 180-00-05/05 H) 724.53

179-47-09 724.52 [CHECK T@W-6]

D) 90-00-00 V) 359-37-40

R) 269-47-05/05 F) 1314.15

R) 89-47-05/05 M) 400.646

D) 270-00-00/00 H) 1314.42

Bs W-7 D) 00-00-00 U) 359-48-90

Tc W-8 R) 179-50-25/25 F) 1094.85

To W-9 R) 359-50-20/20 M) 333.713

D) 180-00-00/05 H) 1094.85

D) 90-00-00 [CHECK SHOT TO W-7]

R) 269-50-25/25 U) 180-50-00

R) 89-50-25/25 F) 729.59

D) 270-00-05/05 M) 220.856

H) 729.51

Bs W-8 D) 00-00-00 V) 359-22-20

Tc W-9 R) 179-13-55/55 F) 1042.09

To W-10 R) 359-19-00/00 M) 317.631

D) 180-00-00/00 H) 1042.03

[CHECK SHOT TO W-8]

D) 90-00-00 V) 180-00-00

R) 269-13-55/55 F) 1094.83

R) 89-13-55/55 M) 333.707

D) 270-00-00/00 H) 1094.83

50-25

50-20 50-21

003

50-17

179-50-22 - 1094.84
(587-55-21E)

50-25

50-25 50-23

005

50-20

13-55

13-58

14-00

179-13-57 1042.04
(588-41-24E)

13-55

13-55

13-55

00-00-00

BS W-9 D) 142-03-05/05 V) 358-47-50
 Tc W-10 R) 322-03-00/00 F) 923.83
 To W-11 R) 180-00-05/05 M) 281.586
 D) H) 923.6/2

[check shot to W-9]

D) 90-00-00 V) 00-25-40
 R) 232-03-00/00 F) 1092.08
 R) 32-02-55/55 M) 317.628
 D) 270-00-00/00 H) 1092.05

BS W-10 D) 00-00-00 V) 00-21-10
 Tc W-11 R) 190-47-55/55 =) 286.67
 To W-12 R) 10-47-50/50 M) 87.378
 D) 180-00-05/05 H) 286.66

[CHECK TO W-10]

D) 90-00-00 V) 00-59-30
 R) 280-47-55/55 F) 923.77
 R) 100-48-00/05 M) 281.567
 D) 270-00-15/15 H) 923.63

03-05

03-00

03-00

0-05

142-02-59 923.63
 (N53-21-35E)

03-00

02-55

02-58

00

47-55

47-50

47-50

0-05

190-47-52-286.66
 (N64-09-27E)

47-55

48-05

47-53

0-15

47-50

BS W-11	D) 00-00-00	V) 01-32-00
Tc W-12	R) 202-32-15/15	F) 188.72
To W-13	R) 22-32-10/05	M) 57.522
	D) 180-00-05/00	H) 188.65

[check shot to W-11]

D) 90-00-00	V) 359-22-40
R) 292-32-15/15	F) 286.67
R) 112-32-15/10	M) 87.378
N) 270-00-05/00	H) 286.65

BS W-12	D) 00-00-00	V) 359-22-00
Tc W-13	R) 187-55-35/35	F) 622.23
To W-14	R) 7-55-30/30	M) 189.657
	D) 180-00-05/05	H) 622.22

[check shot to W-12]

D) 90-00-00	V) 358-08-10
R) 277-55-30/30	F) 188.74
R) 97-55-20/25	M) 57.531
D) 269-59-50/50	H) 188.64

32-15	} 32-10
32-08	
0-03	
32-05	

(202-32-12 - 188.65')
(N86-41-39 E)

32-15	} 32-13
32-13	
0-03	
32-10	

55-35
55-30
0-05
55-25

55-30

(187-55-31 - 622.22)
(S85-22-50 E)

55-30
55-23
+ 10
55-33

55-32

BS W-13 A) 00-00-00 V) 359-55-20

Tc W-14 R) 189-07-40/40 F) 373.06

TO W-15 R) 9-07-50/45 M) 113.709

D) 179-59-50/50 H) 373.05

[check shot to W-13]

D) 90-00-00 V) 00-04-50

R) 279-07-45/45 F) 622.22

R) 99-07-50/45 M) 189.659

D) 276-00-00/00 H) 622.22

BS W-14 A) 00-00-00 V) 00-00-00

Tc W-15 R) 192-25-10/10 F) 374.19

TO W-16 R) 12-25-10/10 M) 114.056

D) 180-00-00/00 H) 374.19

[check shot to W-14]

D) 90-00-00 V) 359-50-20

R) 282-25-10/10 F) 373.03

R) 102-25-10/10 M) 113.702

D) 270-00-00/00 H) 373.03

07-40

07-48 07-49

⊕ 10

07-58

(189-07-48-373.04)

(576-15-02E)

07-45 07-47

07-48

25-10

192-25-10-374.20

(563-49-52E)

25-10

BS W-15 A) 00-00-00 V) 359-35-00
 Tc W-16 R) 194-13-20/20 F) 261.97
 To W-17 R) 14-13-20/20 M) 79.850
 A) 180-00-00/00 H) 261.96

[check shot to W-15]

A) 90-00-00 V) 359-45-00
 R) 284-13-30/30 F) 374.22
 R) 104-13-30/35 M) 114.069
 A) 270-00-10/15 H) 374.22

BS W-16 A) 00-00-00 V) 00-30-00
 Tc W-17 R) 189-58-55/55 F) 303.43
 To W-18 R) 9-58-45/45 M) 79.848
 A) 180-00-05/05 H) 303.42

[check shot to W-16]

A) 90-00-00 V) 00-08-30
 R) 279-58-55/55 F) 261.96
 R) 99-58-55/55 M) 79.848
 A) 270-00-00 H) 261.96

13-20 13-20
 (194-13-18-261.96')
 (549-36-34E)
 13-20
 13-33 13-15
 @ 13
 13-20
 To P.T D) 00-00-00 QH) 14.18'
 R) 335-16-50
 R) 155-16-50
 D) 180-00-05
 58-55
 58-45 58-48
 @ 05 (189-58-52 303.42)
 58-40 58-55 (539-37-42E)

6/21/84

BS. W-17 D) 00-00-00 V) 00-06-20

To W-18 R) 190-51-00 E) 432.92

To W-19 R) 10-51-27 M) 131.957

D) 180-70-00 H) 432.63

D) 90-00-00 (CHECK TO W-17)

R) 280-51-05 V) 359-14-10

R) 100-51-40 F) 303.94

D) 270-50-10 M) 98.187

H) 303.11

BS. W-13 D) 00-00-00 V) 00-03-20

To W-19 R) 165-17-00 F) 460.50

To W-20 R) 345-17-00 M) 140.363

D) 180-00-00 H) 460.50

(CHECK TO W-18)

D) 90-00-00 V) 351-39-20

R) 255-17-05 F) 432.93

R) 75-17-05 M) 131.960

D) 270-00-05 H) 432.57

15

51-25

51-26

51-27

190-51-29 432.60'

(528-46-13 E)

51-35

51-40 51-32

①

51-30

17-00

17-00

17-00

165-17-02 - 460.50

(543°-29'-11"E)

17-05-00

17-05-00 17-03

②

B.S. W-19	D) 00-00-00	V) 357-16-22
T.W-20	R) 1-2-16-22	F) 410.48
T.W-21	R) 327-16-25	M) 125.116
	D) 180-00-00	H) 410.01
		(V DIST W-19)
	D) 90-00-00	V) 359-43-00
	R) 237-16-35	F) 460.50
	R) 57-16-35	M) 140.361
	D) 270-00-00	H) 460.49

B.S. W-20	D) 00-00-00	V) 2-39-20
T.W-21	R) 172-49-42	F) 1420.52
T.W-22	R) 352-49-42	M) 430.976
	D) 180-00-05	H) 1420.44
		✓ DIST TO W-20
	D) 90-00-00	V) 0-36-00
	R) 262-49-38	F) 410.47
	R) 83-49-35	M) 125.112
	D) 70-00-20	H) 410.03

16-22	16-24
16-25	
	(147-16-29 410.02)
	(576-12-42 E)
	357-16-25
16-35	16-35
16-35	

49-42	
45-42	49-40
005	(172-45-39-1420.40)
49-37	(5830-23'-03" E)
49-39	49-37
49-35	

B.S.W-21 D) 00-00-00 V) 358-53-20

76 W-22 R) 179-26-15 F) 1169.63

70 W-23 R) 359-26-08 M) 356.506

ENO
18-614-03 D) 180-00-00 H) 1169.41

✓ DIST 70 W-21

D) 90-00-00 V) 359-13-00

R) 269-26-08 F) 1420.50

R) 89-26-00 M) 482.772

D) 270-00-00 H) 1420.36

===

26-15

26-08

26-12

(179-26-08 1169.41)
(883-56-55E)

26-08

26-00

26-04

7/11/84

TERRY-MARK

TIE IN PLAT OF AK-SAR-BEN

F.S.W-21 V) 357-48-20

To W-22 F) 568.75

To P.O.L. ^B M) 173.357

H) 568.30'

To P.O.L. ^E V) 358-34-00

F) 873.75

M) 266.320

H) 873.47

To P.O.L. ^E V) 358-49-00

F) 1032.25

H) 314.632

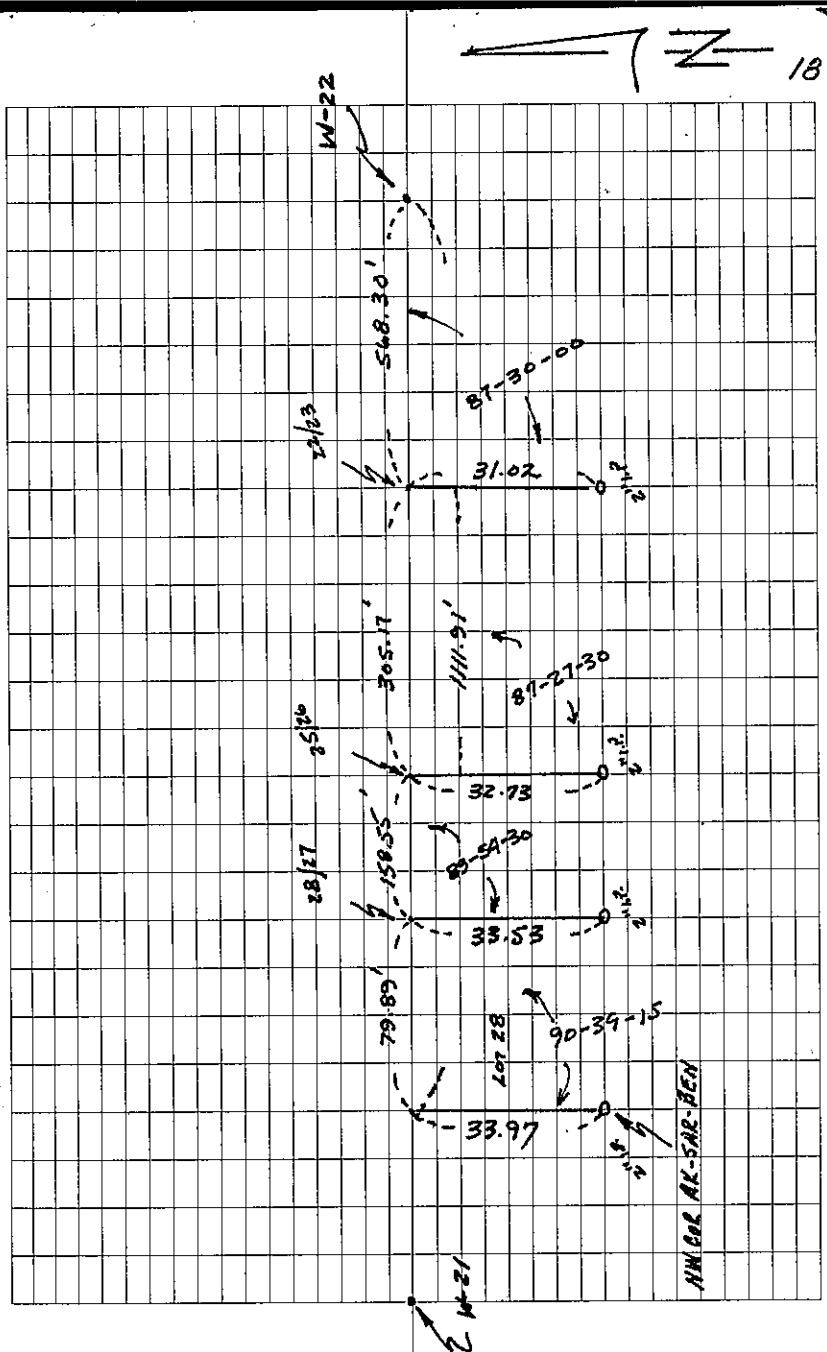
M) 1032.02

To P.O.L. ^D V) 000-00-40

H) F) 1111.91 (*)

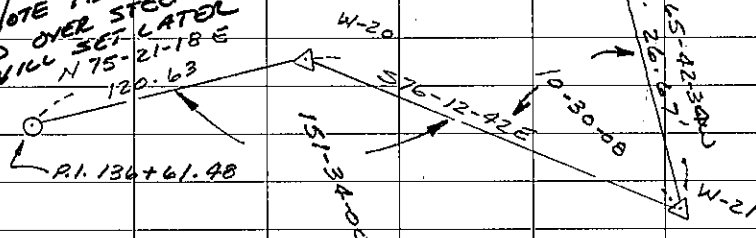
(H) M) 338.911

(S) H) 1111.91 OK

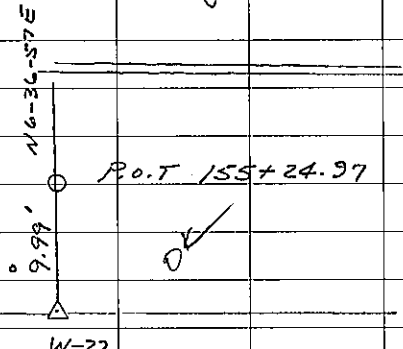
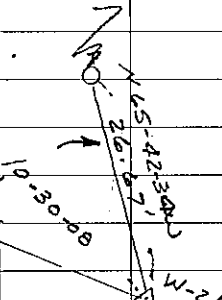


STAKING NOTES
7/13/84

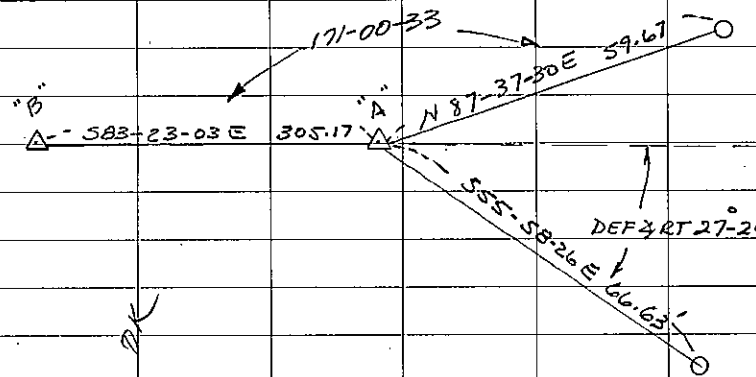
NOTE P.I.
IS OVER STEEP BANK
WILL SET LATER
N 75-21-18 E



PC 140+79.15



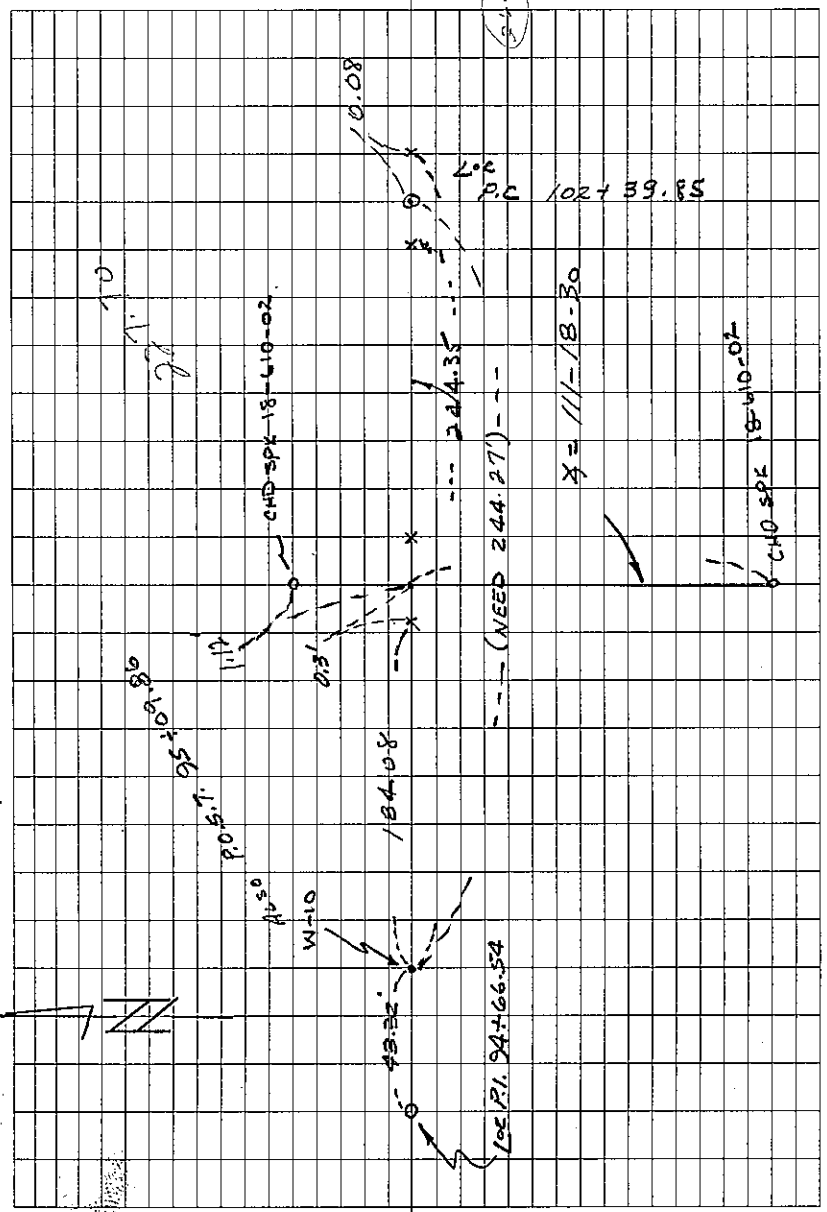
P.O.T 150+15.60



SET & PT LOT 22

SEE PAGE 21 FOR ADD. STAKING NOTES!

W-11



LOC. P.I. 94+66.54

X = 111-18-30

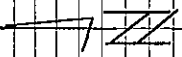
(NEED 244.27)

CHD SPE 18-410-02

CHD SPE 18-410-02

P.C 102+39.85

115.42



18-614-03

Q CONTROL

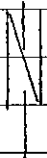
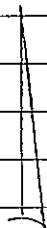
BEGIN STAKING

JUNE 22, 1984

TERRY - MARK S.

TIES FOR 0+00

1/2" RE-ROD



TIES FOR P.C. 9+55.30

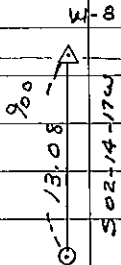
9" STEEL PIN W/HUB

9" STEEL PIN



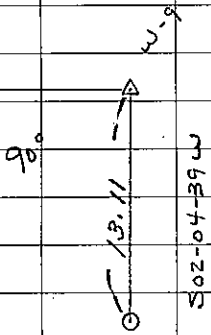
STAKING NOTES CONT
7/13/84 BB-MS

W-7



P.O.T. 73+63.52

W-8



100 P.O.T. 84+58.40