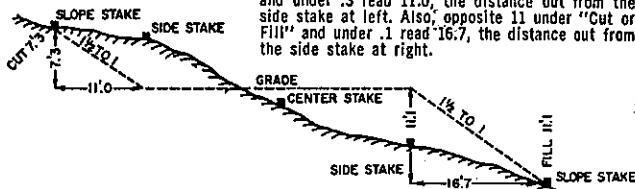


CWC Field Book
No. 6

DISTANCES FROM SIDE STAKES FOR CROSS-SECTIONING

Roadway of any Width. Side Slopes 1½ to 1.

In the figure below: opposite 7 under "Cut or Fill" and under .3 read 11.0, the distance out from the side stake at left. Also, opposite 11 under "Cut or Fill" and under .1 read 16.7, the distance out from the side stake at right.



Cut or Fill	Distance out from Side or Shoulder Stake									Cut or Fill	
	0	.1	.2	.3	.4	.5	.6	.7	.8		.9
0	0.0	0.2	0.3	0.5	0.6	0.8	0.9	1.1	1.2	1.4	0
1	1.5	1.7	1.8	2.0	2.1	2.3	2.4	2.6	2.7	2.9	1
2	3.0	3.2	3.3	3.5	3.6	3.8	3.9	4.1	4.2	4.4	2
3	4.5	4.7	4.8	5.0	5.1	5.3	5.4	5.6	5.7	5.9	3
4	6.0	6.2	6.3	6.5	6.6	6.8	6.9	7.1	7.2	7.4	4
5	7.5	7.7	7.8	8.0	8.1	8.3	8.4	8.6	8.7	8.9	5
6	9.0	9.2	9.3	9.5	9.6	9.8	9.9	10.1	10.2	10.4	6
7	10.5	10.7	10.8	11.0	11.1	11.3	11.4	11.6	11.7	11.9	7
8	12.0	12.2	12.3	12.5	12.6	12.8	12.9	13.1	13.2	13.4	8
9	13.5	13.7	13.8	14.0	14.1	14.3	14.4	14.6	14.7	14.9	9
10	15.0	15.2	15.3	15.5	15.6	15.8	15.9	16.1	16.2	16.4	10
11	16.5	16.7	16.8	17.0	17.1	17.3	17.4	17.6	17.7	17.9	11
12	18.0	18.2	18.3	18.5	18.6	18.8	18.9	19.1	19.2	19.4	12
13	19.5	19.7	19.8	20.0	20.1	20.3	20.4	20.6	20.7	20.9	13
14	21.0	21.2	21.3	21.5	21.6	21.8	21.9	22.1	22.2	22.4	14
15	22.5	22.7	22.8	23.0	23.1	23.3	23.4	23.6	23.7	23.9	15
16	24.0	24.2	24.3	24.5	24.6	24.8	24.9	25.1	25.2	25.4	16
17	25.5	25.7	25.8	26.0	26.1	26.3	26.4	26.6	26.7	26.9	17
18	27.0	27.2	27.3	27.5	27.6	27.8	27.9	28.1	28.2	28.4	18
19	28.5	28.7	28.8	29.0	29.1	29.3	29.4	29.6	29.7	29.9	19
20	30.0	30.2	30.3	30.5	30.6	30.8	30.9	31.1	31.2	31.4	20
21	31.5	31.7	31.8	32.0	32.1	32.3	32.4	32.6	32.7	32.9	21
22	33.0	33.2	33.3	33.5	33.6	33.8	33.9	34.1	34.2	34.4	22
23	34.5	34.7	34.8	35.0	35.1	35.3	35.4	35.6	35.7	35.9	23
24	36.0	36.2	36.3	36.5	36.6	36.8	36.9	37.1	37.2	37.4	24
25	37.5	37.7	37.8	38.0	38.1	38.3	38.4	38.6	38.7	38.9	25
26	39.0	39.2	39.3	39.5	39.6	39.8	39.9	40.1	40.2	40.4	26
27	40.5	40.7	40.8	41.0	41.1	41.3	41.4	41.6	41.7	41.9	27
28	42.0	42.2	42.3	42.5	42.6	42.8	42.9	43.1	43.2	43.4	28
29	43.5	43.7	43.8	44.0	44.1	44.3	44.4	44.6	44.7	44.9	29
30	45.0	45.2	45.3	45.5	45.6	45.8	45.9	46.1	46.2	46.4	30
31	46.5	46.7	46.8	47.0	47.1	47.3	47.4	47.6	47.7	47.9	31
32	48.0	48.2	48.3	48.5	48.6	48.8	48.9	49.1	49.2	49.4	32
33	49.5	49.7	49.8	50.0	50.1	50.3	50.4	50.6	50.7	50.9	33
34	51.0	51.2	51.3	51.5	51.6	51.8	51.9	52.1	52.2	52.4	34
35	52.5	52.7	52.8	53.0	53.1	53.3	53.4	53.6	53.7	53.9	35
36	54.0	54.2	54.3	54.5	54.6	54.8	54.9	55.1	55.2	55.4	36
37	55.5	55.7	55.8	56.0	56.1	56.3	56.4	56.6	56.7	56.9	37
38	57.0	57.2	57.3	57.5	57.6	57.8	57.9	58.1	58.2	58.4	38
39	58.5	58.7	58.8	59.0	59.1	59.3	59.4	59.6	59.7	59.9	39
40	60.0	60.2	60.3	60.5	60.6	60.8	60.9	61.1	61.2	61.4	40

LAKELAND STATE BANK

PEQUOT LAKES, MN 56472 • 218/568-4025



(3/21/84)

TIE IN M.C.

TIE IN 1/4 COR 20/21

CROSSLAKE OFFICE, CROSSLAKE, MN 56442
DIAL 218/692-2455



The paper in this book is made of 50% high grade rag stock with a WATER RESISTING surface sizing.

KEUFFEL & ESSER CO.

INDEX

5- TANK'S ROAD NLINE
OF THE SK 5.32-134-28

10- ADD. TIE LN OF CORNERS
18-619-01 MIC FAUPER LACE
AND YACON 20/21 13527

EHD-83-17
TANKS TRAIL

S.32-134-28-5TH.

BEGIN 10/21/83 TDB
RDV

B.S. 1/4 Cor D 00-00-00 D 90-00-00

To T-1 R 88-35-17/21 R 178-35-16/18

to T-2 R 268-35-27/24 R 358-35-30/27

D 179-59-57/52 D 270-00-15/15

V) 00-04-08

F) 482.35'

M) 147.023

(H) 482.35'

BST-1 D) 00-00-00 D) 90-00-00

To T-2 R) 182-40-18/16 R) 272-40-12/20

to T-3 R) 2-40-22/24 R) 92-40-03/06

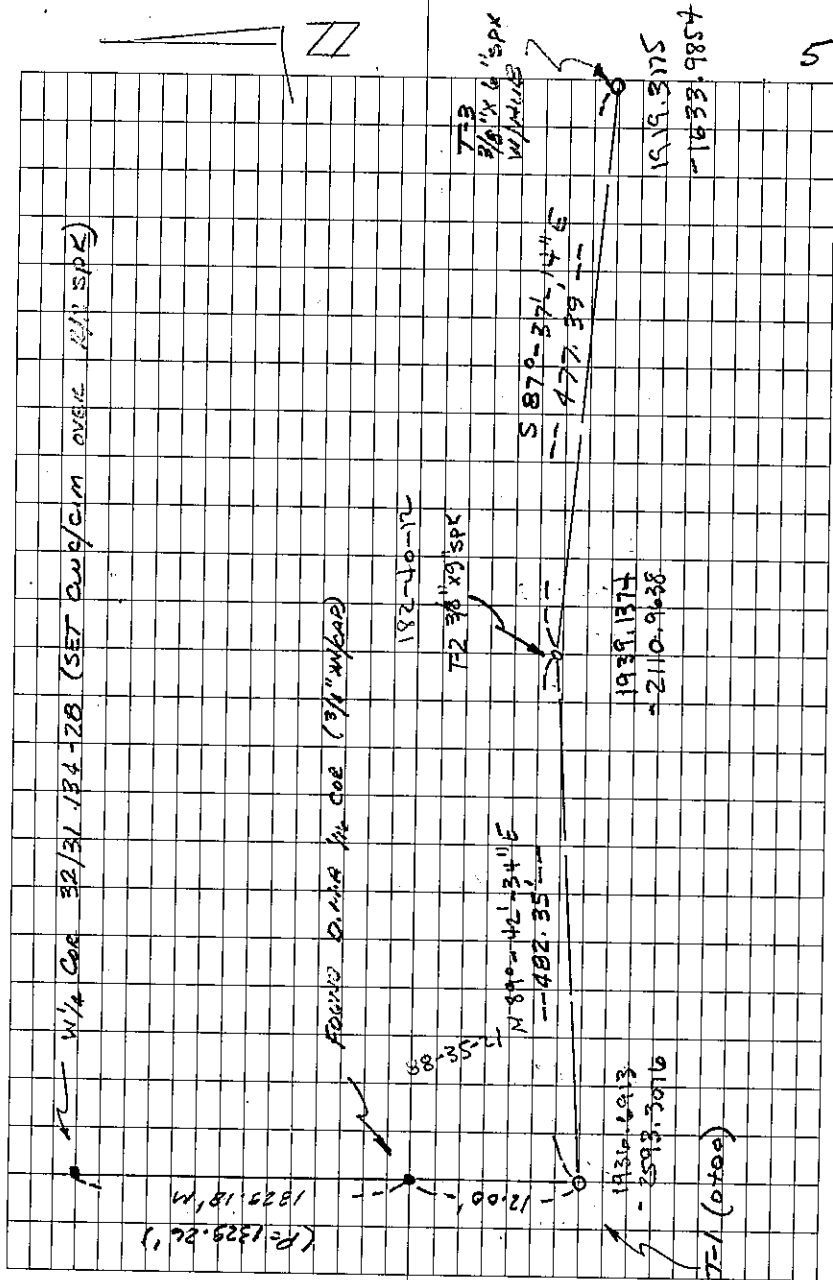
D) 180-00-05/03 D) 270-00-00/00

V) 359-47-25

F) 477.39

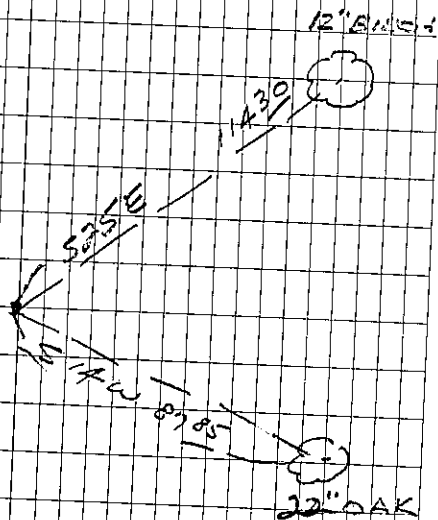
M) 145.511

(H) 477.39



P.O.R.T. 73+63.52

9" SPK / MARKS



P.O.S.T 84+58.40

9" spk

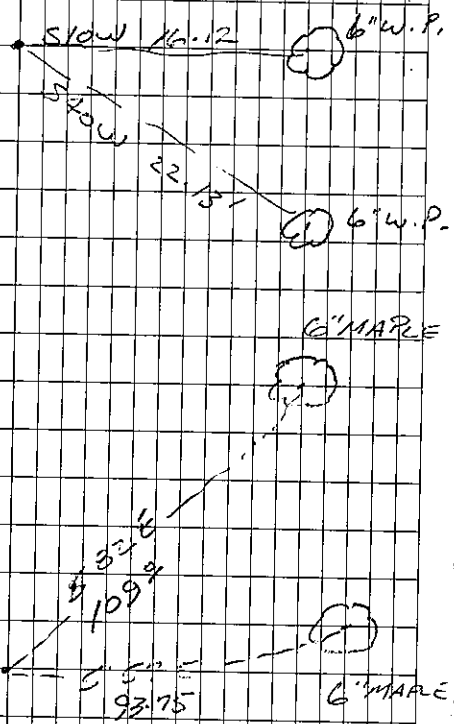
P.C.

P.I. Loc 94+66.54

9"SPK

Loc P.T. 97+32.08

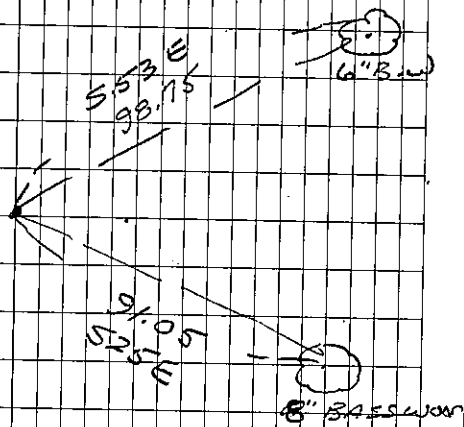
9"SPK & EXIST MAT



P.C. 102 + 39.85

9" SPK & EXIST MAT

P.I.



P.T. 110+65.04

9" SPIKE

EXIST MAT

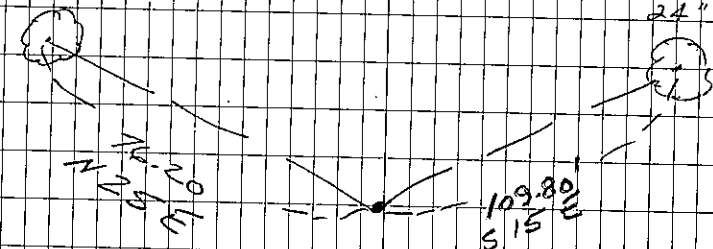
P.C. 114+89.33

EXIST MAT

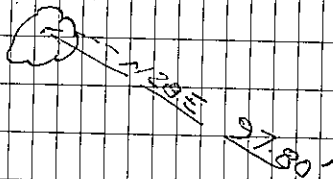
9" SPIKE

16" MAPLE

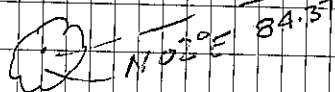
24" MAPLE



18" MAPLE



24" MAPLE

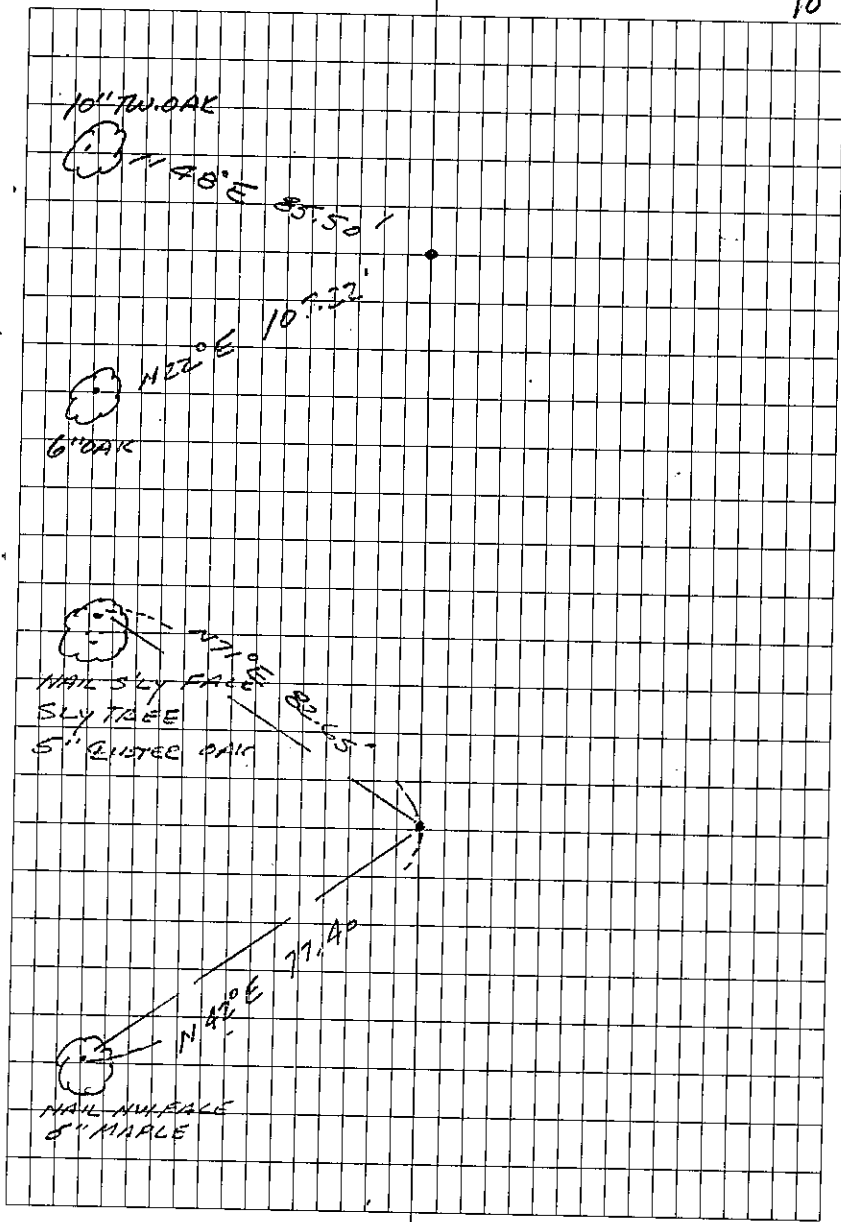


P.T. 129+05.14

9" SPK & EXIST MAT

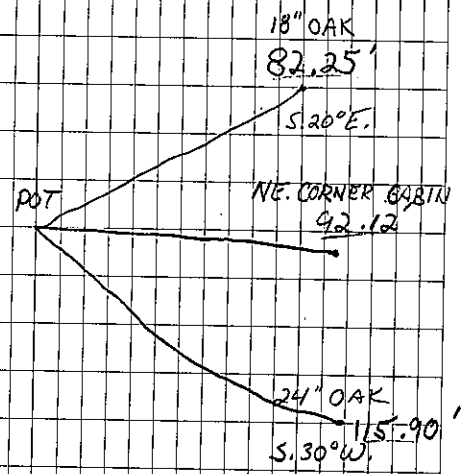
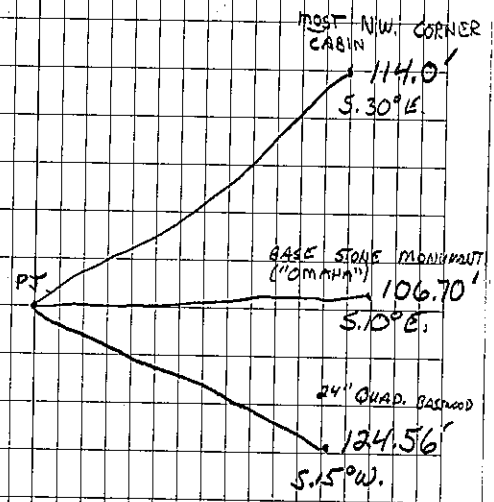
P.C. 131+67.67

9" SPK



P.T. 140 + 79.15
SPIKE IN ROAD

P.O.T. 150 + 15.60
SPIKE IN ROAD



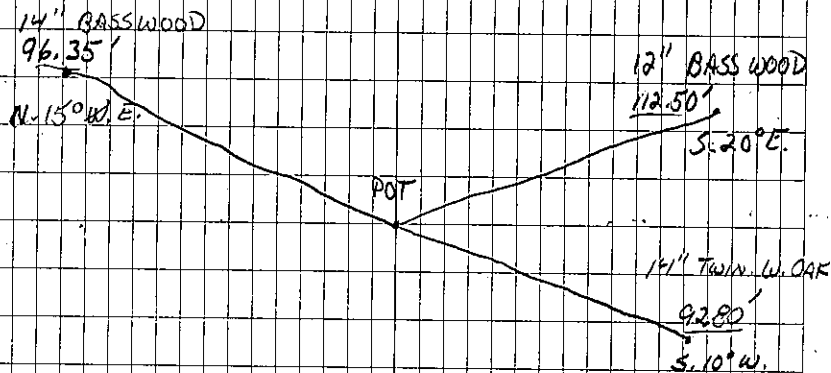
8/6/64

AM. SUNNY, HOT. WIND 90°

J. ADLER
M. SNODGRASS

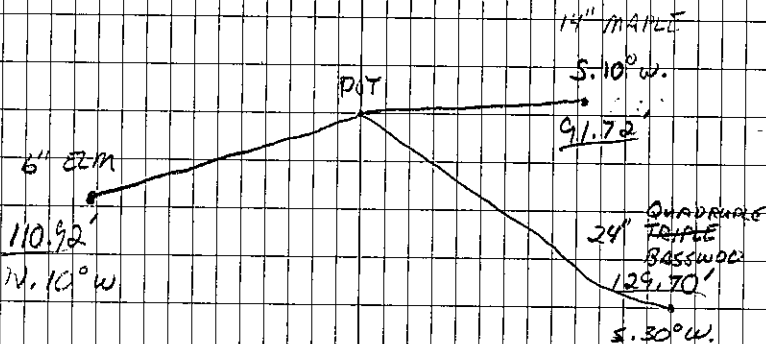
E

80



POT 155 + 24.97

SPIKE IN ROAD EDGE



POT 166 + 94.32 (END 14-03)

SPIKE IN ROAD