

Upper Hay Lake

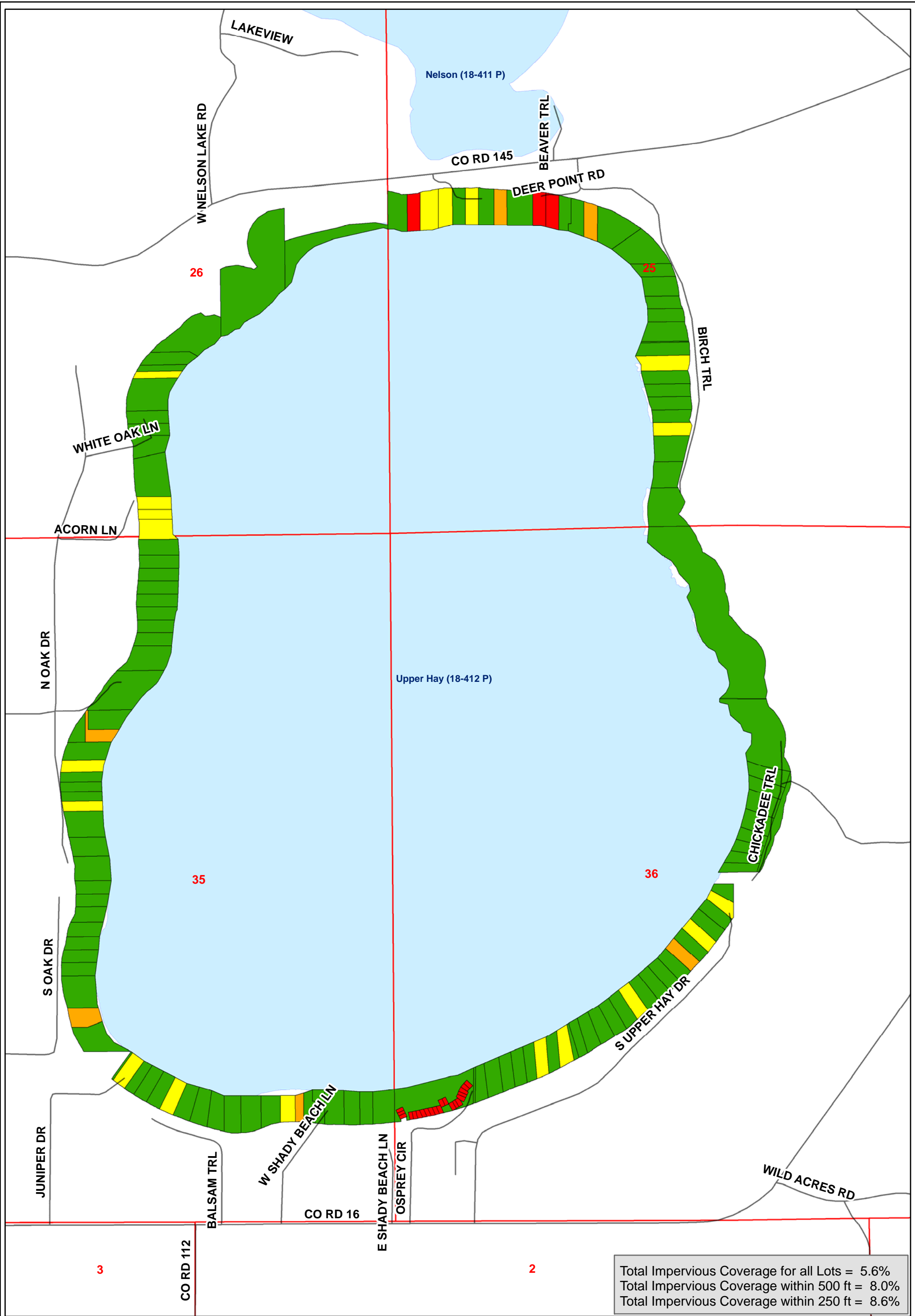
Impervious Surface Coverage by Parcel

- 0 - 15 %
- 15 - 20 %
- 20 - 25 %
- 25+ %
- Section Lines
- Roads
- Lakes

THIS DRAWING IS A COMPILATION OF RECORDS AS THEY APPEAR IN THE CROW WING COUNTY OFFICES AFFECTING THE AREA SHOWN AND IS TO BE USED ONLY FOR REFERENCE PURPOSES. THE COUNTY IS NOT RESPONSIBLE FOR ANY INNACCURACIES HERIN CONTAINED.



0 0.125 0.25 0.5 Miles



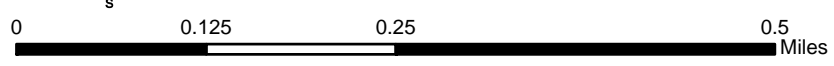
Total Impervious Coverage for all Lots = 5.6%
 Total Impervious Coverage within 500 ft = 8.0%
 Total Impervious Coverage within 250 ft = 8.6%

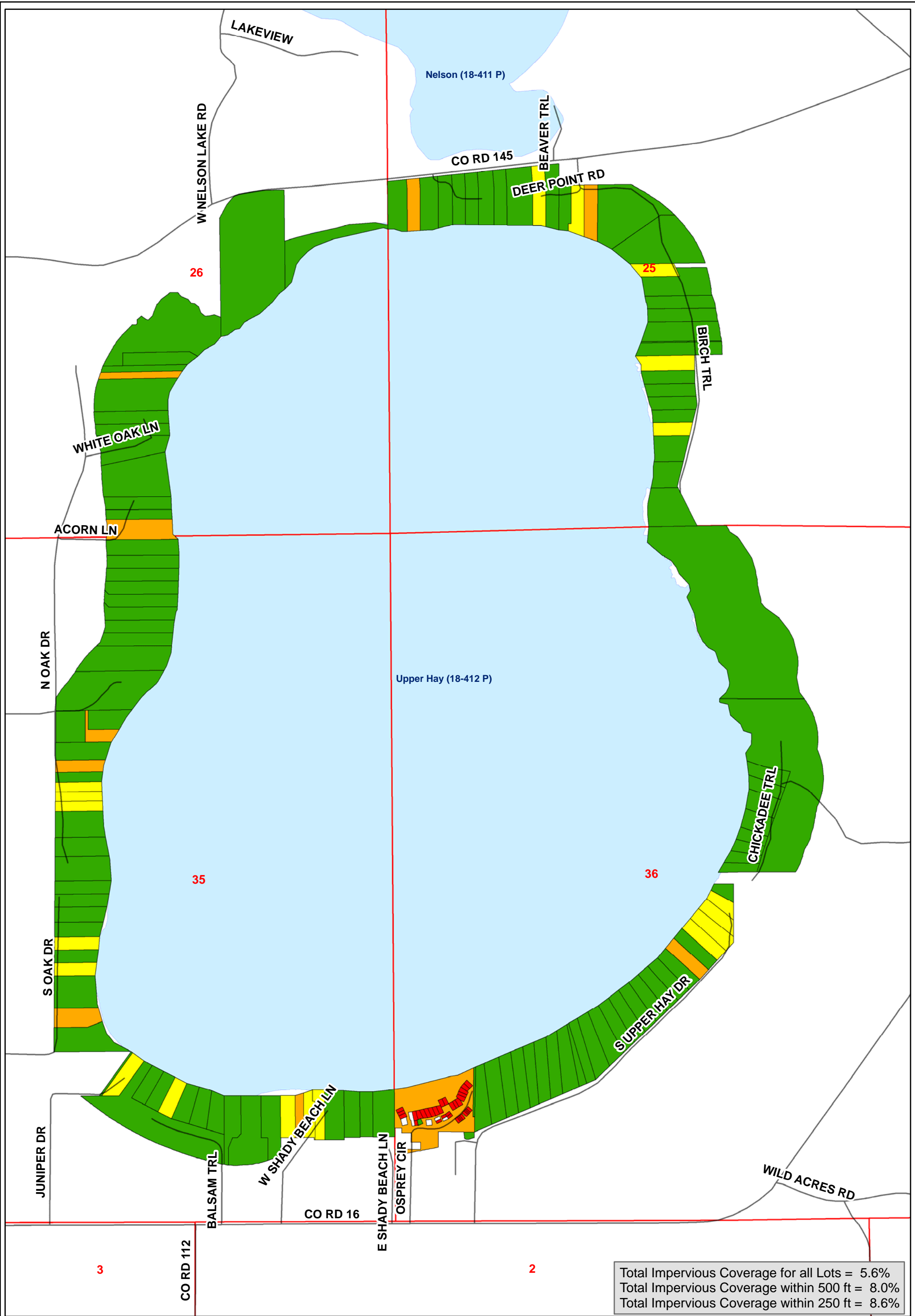
Upper Hay Lake

Impervious % within 250 ft of Shoreline

- 0 - 15 %
- 15 - 20 %
- 20 - 25 %
- 25+ %
- Section Lines
- Roads
- Lakes

THIS DRAWING IS A COMPILATION OF RECORDS AS THEY APPEAR IN THE CROW WING COUNTY OFFICES AFFECTING THE AREA SHOWN AND IS TO BE USED ONLY FOR REFERENCE PURPOSES. THE COUNTY IS NOT RESPONSIBLE FOR ANY INNACCURACIES HERIN CONTAINED.





Upper Hay Lake

Impervious % within 500 ft of Shoreline

- 0 - 15 %
- 15 - 20 %
- 20 - 25 %
- 25+ %
- Section Lines
- Roads
- Lakes

THIS DRAWING IS A COMPILATION OF RECORDS AS THEY APPEAR IN THE CROW WING COUNTY OFFICES AFFECTING THE AREA SHOWN AND IS TO BE USED ONLY FOR REFERENCE PURPOSES. THE COUNTY IS NOT RESPONSIBLE FOR ANY INNACCURACIES HERIN CONTAINED.



0 0.125 0.25 0.5 Miles