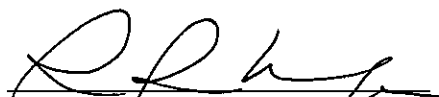


Pelican County Forest Road # 18, Crow Wing County, Minnesota

PARCEL #	RE_CODE	FEENAME	SECTION	TOWNSHIP	RANGE	LEGAL DESCRIPTION
PARCEL 1	770073300000009	POTLATCH FOREST HOLDINGS INC	7	136	27	SW1/4 OF SW1/4
PARCEL 2	770073400A00009	MEZZENGA, LUCAS & TARA	7	136	27	SE1/4 OF SW1/4, EXCEPT THE N1/2 OF THE SE1/4
PARCEL 3	770073400000009	POTLATCH FOREST HOLDINGS INC	7	136	27	SE1/4 OF SW1/4, EXCEPT THE S1/2 OF THE SE1/4
PARCEL 4	770073100B00009	ROACH, ROBERT & DARLENE	7	136	27	PT OF NE1/4 OF SW1/4
PARCEL 5	770073202000009	POTLATCH FOREST HOLDINGS INC	7	136	27	LOT 2 (NW1/4 OF SW1/4)
PARCEL 6	820124100000009	TAX FORFEITED	12	136	28	NE1/4 OF SE1/4
PARCEL 7	820124200000009	TAX FORFEITED	12	136	28	NW1/4 OF SE1/4

May 7, 2008
DATE OF PUBLIC HEARING

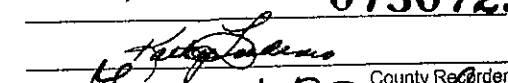


RACHEL REABE NYSTROM, CHAIR
BOARD OF COUNTY COMMISSIONERS
CROW WING COUNTY, MINNESOTA

CROWWING RECORDING SPACE BELOW

Office of County Recorder }
County of Crow Wing, MN } *NK*
I hereby certify that the within instrument was filed *CO WK*
in this office for record on the 15 day of July
A.D. 2008 at 3 o'clock P M.
and was duly recorded as Doc. No. 0750723

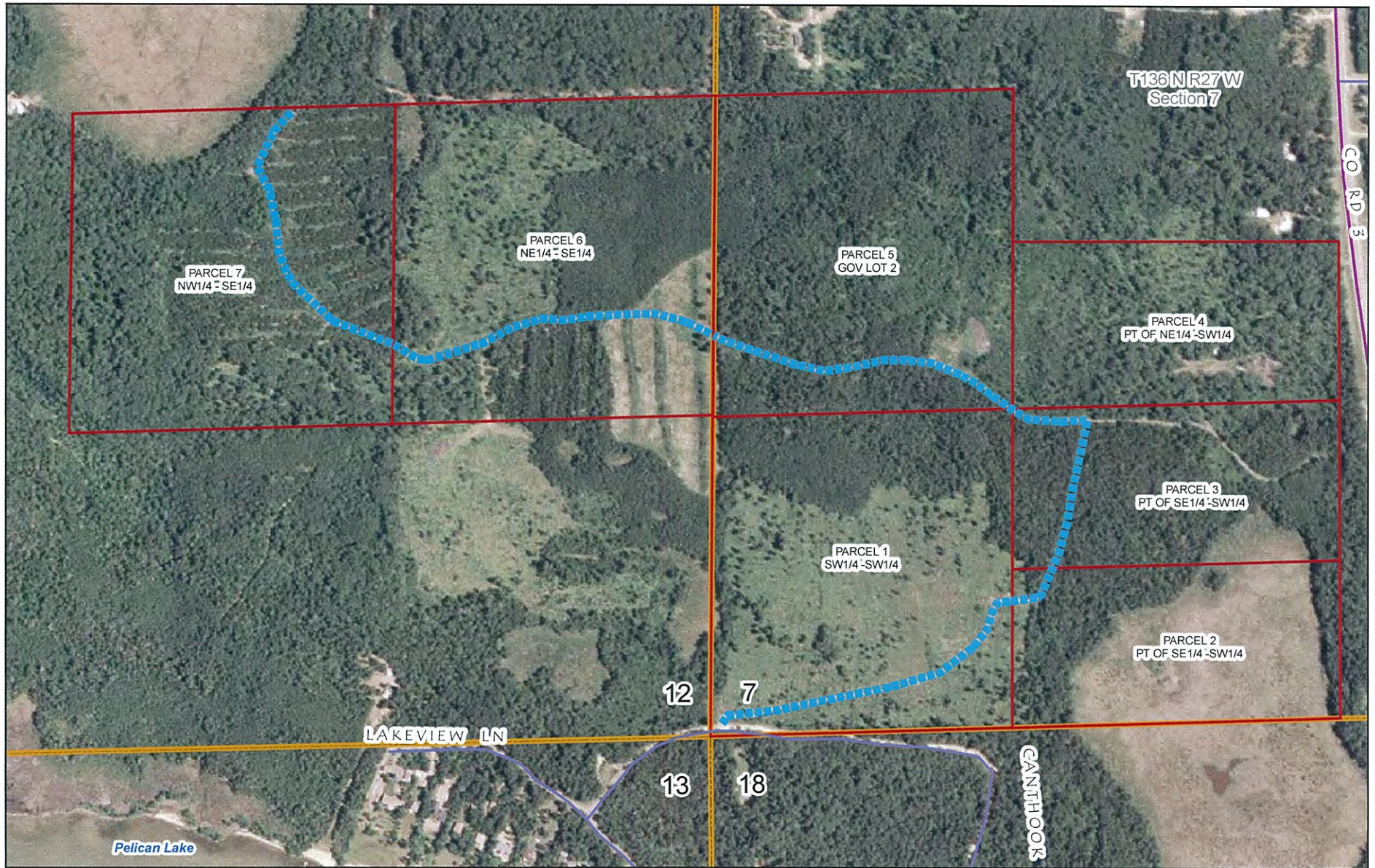
ATTEST: 
DEBORAH A. ERICKSON, COUNTY AUDITOR
CROW WING COUNTY, MINNESOTA

Adopted at Brainerd, Minnesota, this 10th day of June, 2008

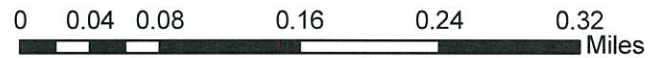

County Recorder
By 
Deputy

RETURN TO Hand Sept.

Pelican County Forest Road #18, Crow Wing County, Minnesota



1 inch equals 556 feet



----- Pelican County Forest Rd

MS 89.715 states "the roads to be recorded will be to the width of the actual use including ditches, backslopes, fills, and maintained rights-of-ways". County Forest Roads are variable in width and the map symbol representing the County Forest Roads is intended to represent the location of those County Forest Roads, not the actual width.